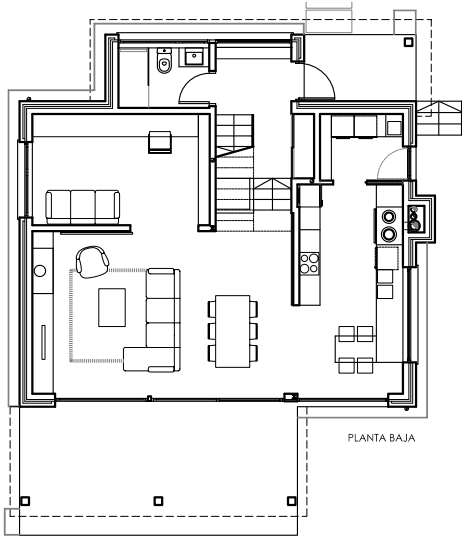
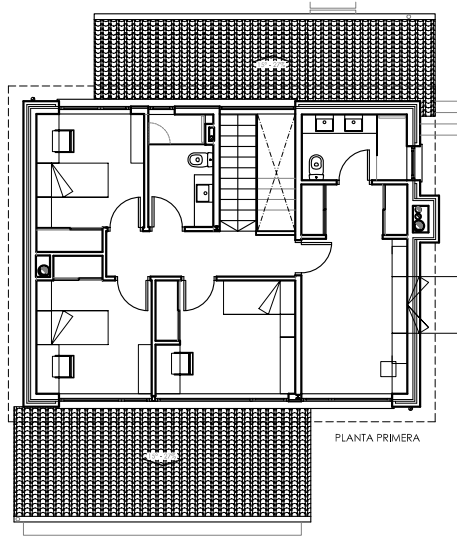


(127/13) VIVIENDA UNIFAMILIAR EN CALLOBRE, CUIÑA, OZA DOS RÍOS

Escala 1/200



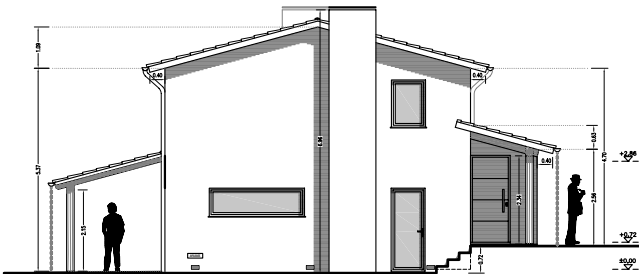
PLANTA BAJA



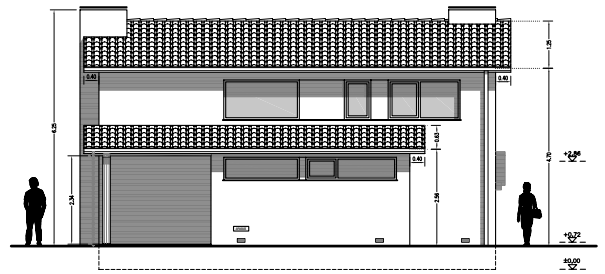
PLANTA PRIMERA

cuadro de superficies

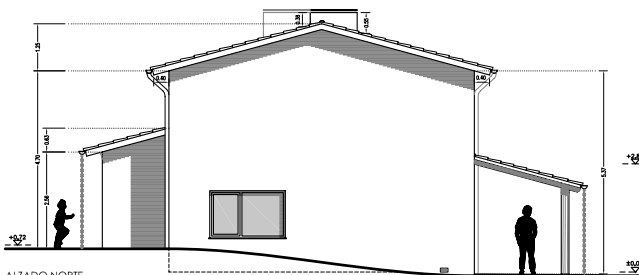
DESCRIPCIÓN	SUP. UTIL	SUP CONSTR.
VIVIENDA	142.02 m²	176.86 m²
PL. BAJA	77.10 m ²	94.64 m ²
vestibulo	7.32 m ²	
escalera 1	1.54 m ²	
escalera 2	0.84 m ²	
baño 1	3.82 m ²	
estar-comedor	30.73 m ²	
estudio	13.79 m ²	
cocina-office	15.21 m ²	
lavandería	2.11 m ²	
tendedero	1.74 m ²	
PL. PRIMERA	64.92 m ²	82.22 m ²
escalera 1	3.08 m ²	
distribuidor	5.90 m ²	
dormitorio 1	15.38 m ²	
baño 2	4.84 m ²	
dormitorio 2	11.04 m ²	
dormitorio 3	10.00 m ²	
dormitorio 4	9.69 m ²	
baño 3	5.01 m ²	
EDIF. AUXIL.	26.00 m ²	29.89 m ²
caldera	26.00 m ²	29.89 m ²
Z. EXTER.	23.55 m ²	23.55 m ²
acceso	4.75 m ²	
porche	18.80 m ²	
TOTAL	191.57 m²	230.30 m²
TOTAL SUP. OCUPADA	162.12 m²	



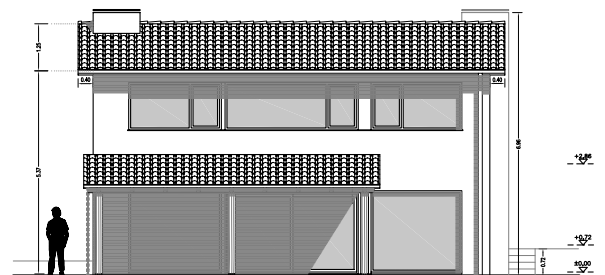
ALZADO SUR



ALZADO ESTE



ALZADO NORTE



ALZADO OESTE