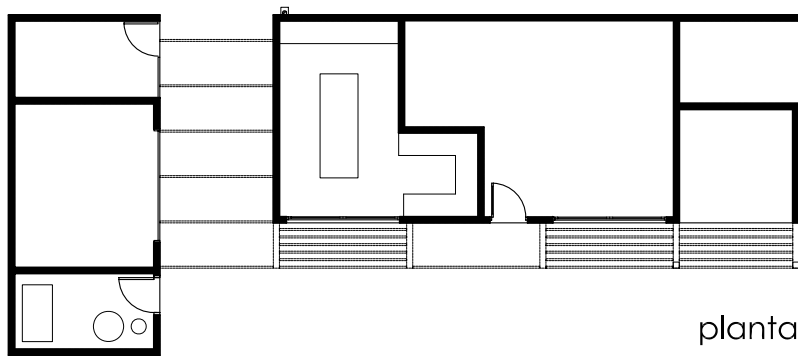
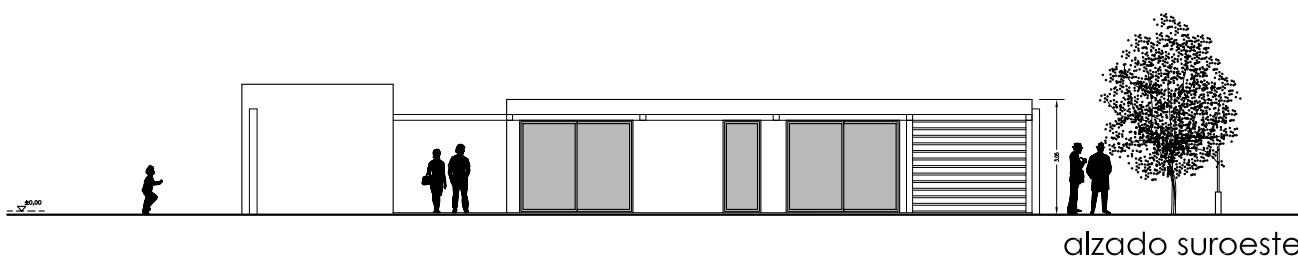


cuadro de superficies

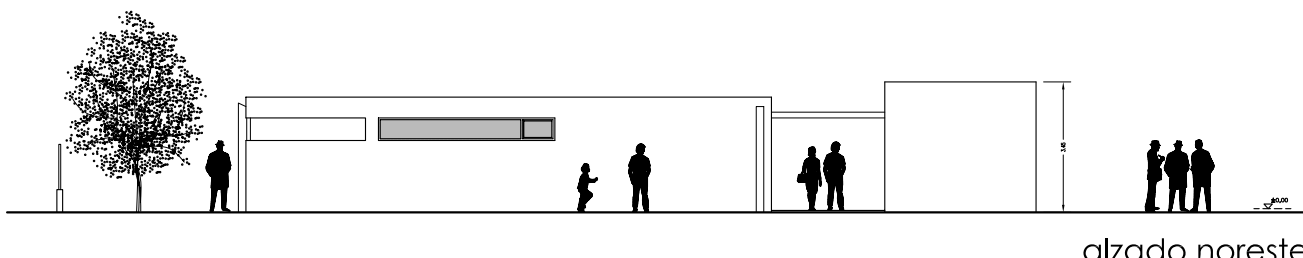
DESCRIPCIÓN	SUPERFICIE UTIL	SUPERFICIE CONSTRUIDA
leñera	7,89 m ²	
maquinaria	15,83 m ²	
instalaciones	7,38 m ²	
oficio	21,01 m ²	
almacén 1	32,03 m ²	
almacén 2	9,00 m ²	
perera	6,89 m ²	
TOTAL	99,91 m ²	112,43 m ²



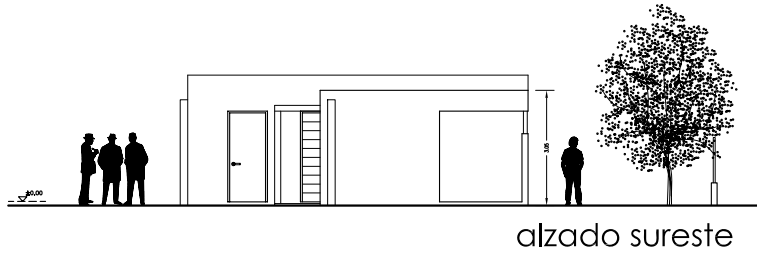
planta



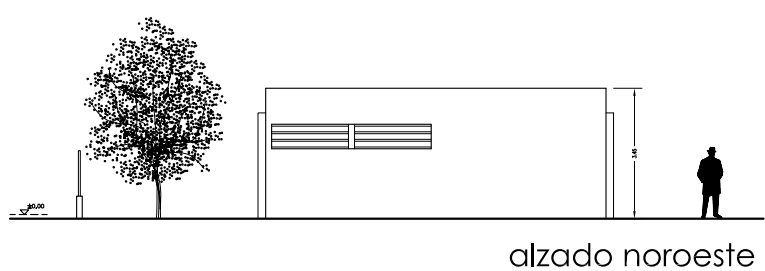
alzado suroeste



alzado noreste



alzado sureste



alzado noroeste